

Twin

twinsummercentres.com

+44 (0) 20 8269 5678



Twin Summer Centres

Centres in the UK and Ireland

2025



Welcome to Twin Summer Centres



Contents

Welcome to Twin summer	04
English programmes	06
Discover London programme	08
Added value packages	10

London centres

London Docklands	12
London Greenwich	13

Irish centres

Dublin	20
--------	----

Other UK centres

Nottingham	14
Norwich	16
Eastbourne	17
Canterbury St. Edmunds	18
Gloucester	19
Lincoln	22

What students think	21
Accommodation	22
Extra services	23

NEW - Added value at every level!

This year we are splitting our two-week (13 night) packages into different tiers.



Platinum



Gold



Silver



Bronze

This helps you book the perfect programme for you; as light or as intense as you want it to be - See Page 10 for details.



Welcome to Twin Summer 25

We're bigger and better than ever!

Following a record-breaking year for Summer Camp bookings for 2024, we're delighted to share our latest portfolio of destinations, including 3 that are new for 2025 – each with its own special appeal. All or close to or inside famous cities and accessible to other, equally famous cities, great for the excursions built into every programme. Explore our full range of options so that your students can explore an ever wider range of UK regions, including our first ever Scottish centre.

Our locations

England, Ireland

- ① London Docklands (page 12)
- ② London Greenwich (page 13)
- ③ Dublin (page 16)
- ④ Canterbury St. Edmunds (page 14)
- ⑤ Gloucester (page 15)
- ⑥ Lincoln (page 22)
- ⑦ Eastbourne (page 17)
- ⑧ Nottingham (page 14)
- ⑨ Norwich (page 16)



An action-packed, unforgettable summer experience



Summer tuition and activities

Our summer programmes are developed to offer enjoyable student experiences by combining tuition with comfortable accommodation, exciting activities, and excursions.

We use the communicative teaching method and project work to create a fun and entertaining teaching approach for students. Our courses help them learn language skills they can use outside of the classroom, in the real world.

Our teachers help students to:

- Develop their English skills
- Build their confidence using and understanding English
- Improve their pronunciation and expand their vocabulary

Activities

We design our activities to support our tuition. The activity programme aims to ensure that every student has an enjoyable experience while encouraging them to practise their English outside of the classroom. Sports, arts and crafts, photography club, and scavenger hunts are just some activities that keep them busy in-between lessons.

We also have team games and activities to keep students busy during the evening hours. Students can dance the evenings away at discos, show off their more competitive side at quiz nights, or socialise with their new friends at a talent show or a film night.



Student excursions

Students have the chance to see more of the UK or Ireland with exciting weekly excursions. These vary by centre, and students can visit popular and historic areas, such as Oxford, Brighton, Cambridge, Glendalough, Ardgillan or Skerries to discover more about the history and culture of the UK or Ireland. Our excursions and activities are linked to the lesson plans and give students more opportunities to socialise while practising their new language skills.



Something for everyone

Two exciting English programmes to choose from

We offer two English programmes in our summer centres – ‘Discover London’ at our London focused centres with zig-zag courses (alternative days teaching / sightseeing) and walking tours, and the ‘UK Explorer’ at all our other centres.

UK Explorer

Combining high-quality English language learning with activities and excursions each day, our UK Explorer programme is a great choice for students looking to get a little of everything out of their stay. Lessons (15 hours a week) take place in the morning with trips and activities after lunch and in the evenings or lessons in the afternoon with excursions in the morning (AM).

Each of our summer centres have a range of different activities scheduled each week. See overpage for a typical week at a Twin summer centre outside of London.

Our English Programmes

Programme	Centre	Lesson Hours	Minimum English Level	Max Class Size	Age	Country	Accommodation Option
UK Explorer	Canterbury, Eastbourne, Gloucester, College, Dublin, Norwich, Nottingham and Lincoln	15	A1	18	Varies by centre	UK, Ireland	Residential
Discover London	London Docklands*	15	A1	18	10-18*	UK	
	London Greenwich				12-18		

*18 year olds only accepted as part of a school group

A range of courses, tailored to your needs

A typical week at a Standard Programme centre*

Day 1 Student arrival



Morning - Meet & greet, orientation tour

Afternoon - Walking tour of the local area

Evening - Welcome evening with fun and games

Day 2 Student induction



Morning - Student induction and language testing

Afternoon - Campus scavenger hunt!

Evening - Students get together for competition time!

Day 3 Lessons begin



Morning - Teaching time (English lessons)

Afternoon - Half day excursion (various locations)

Evening - Get your thinking caps on for a Twin quiz night!

Day 4 Half-day excursion/tour



Morning - Teaching time

Afternoon - Half-day excursion (various locations)

Evening - Who did it? Twin murder mystery!

Day 5 Lessons and activities



Morning - Teaching time (English lessons)

Afternoon - Sports tournament

Evening - Dance away at a Twin disco!

Day 6 Full-day excursion/tour



Morning/Afternoon - Full-day excursion (various locations)

Evening - Grab the popcorn and settle down for film night

A range of activities and excursions with English tuition

*Programme subject to change. Centre may be required to run a zig-zag programme based on student numbers.



Discover London Programme

At London Docklands and London Greenwich.

One of the most popular tourist destinations in the world, London easily blends rich history with modern culture, offering an unforgettable experience for international students. Explore iconic landmarks like Elizabeth Tower (widely known as Big Ben, which actually is the name of the bell inside), Tower Bridge, and Buckingham Palace, each telling its own unique story.

Through a number of carefully planned walking tours, the Discover London programme is perfect for students who want to see all the iconic sights of London.

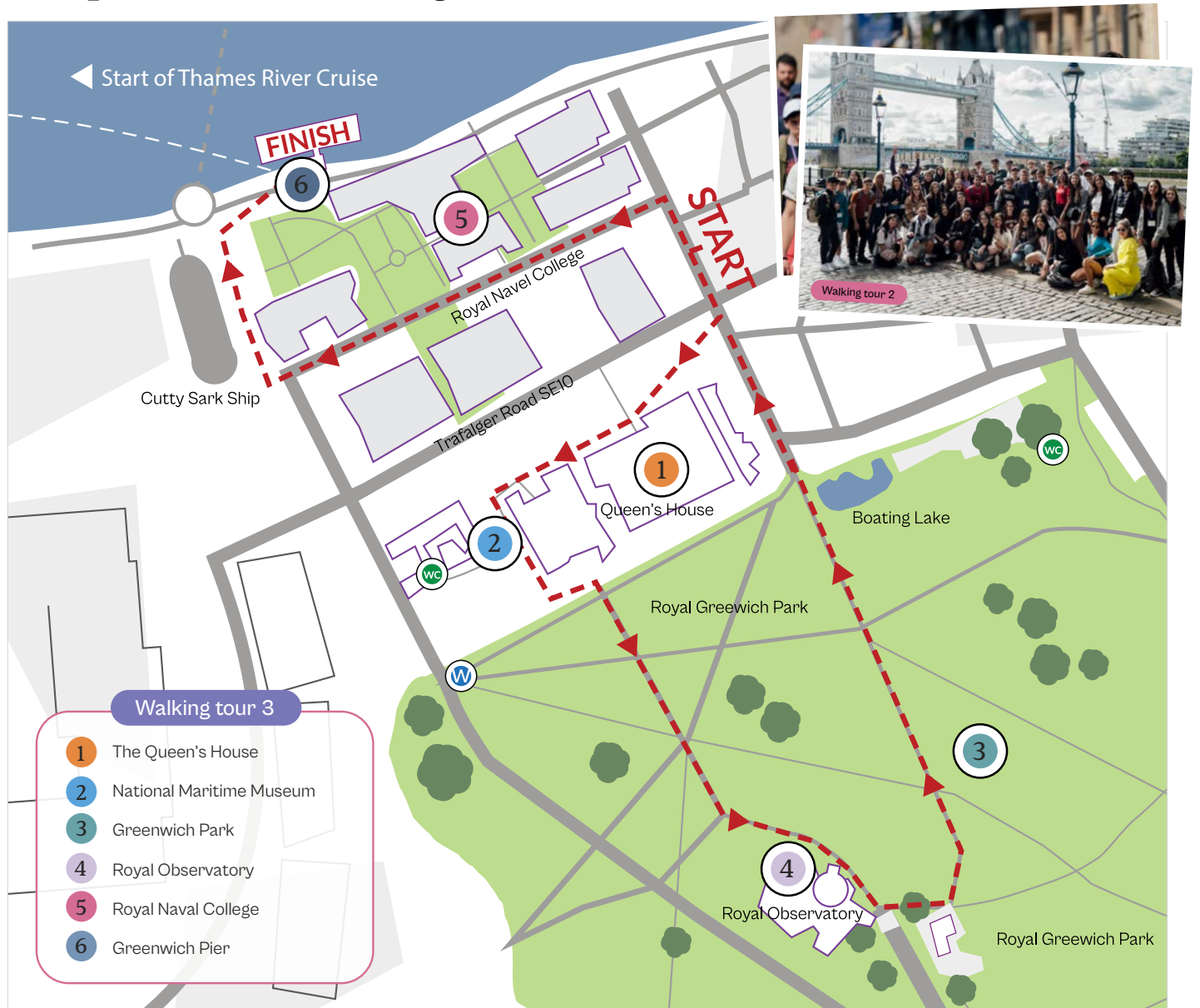
Students will alternate their days between English tuition and sightseeing, with lessons following the same syllabus as our Standard Programme.

Sample Programme - Discover London

Time	Day 1	Day 2	Day 3	Day 4	Day 5	Day 6	Day 7
09:00 - 17:30	Meet & Greet, Orientation Tour	English Lessons	Full-Day London Walking Tour (see sample tour opposite)	English Lessons	Full-Day London Walking Tour (see sample tour opposite)	English Lessons	Full-Day London Walking Tour (see sample tour opposite)
20:00 - 22:00	Welcome Evening	Building Competition	Quiz Night	Staff Vs Students Competition	Twin Disco Night	Trash Fashion	Film night

Explore the historic capital of the UK on foot

Sample London Walking Tours



Walking Tour - 1

Thames River Cruise • London Eye • Big Ben • Houses of Parliament

Walking Tour - 2

Tower of London • Tower Bridge • HMS Belfast • The Southbank

Walking Tour - 3

Greenwich Maritime Museum • Greenwich Park • The Royal Observatory

Walking Tour - 4

Madame Tussauds • Knightsbridge • The Science Museum

Walking Tour - 5

British Museum • Tottenham Court Road • Regent Street • Oxford Street

Walking Tour - 6

Camden Lock Market • Amy Winehouse Statue • Camden Lock Market

Walking Tour - 7

London Wall • Spitalfield's Market • Brick Lane • Diagon Alley (Harry Potter)

Walking Tour - 8

The London Palladium • Ronnie Scott's Jazz Club • Oxford Street shopping

Follow tailored tour routes to see the best London has to offer



Added value at every level!

All Twin two-week (13-night) packages offer an amazing opportunity for students to learn and explore, with exciting additional excursions.

Discover London

At London Docklands and London Greenwich

P London Platinum Package

- Minimum 5 full-day excursions to London*
- 1 full-day excursion to Brighton, including Brighton Pavillion
- 1 full-day excursion to Cambridge
- River Cruise, London Eye, Madame Tussauds, Tower of London, and Football Stadium - All entrances included
- Brighton Pavilion

G London Gold Package

- Minimum 5 full-day excursions to London*
- 1 full-day excursion to Brighton
- 1 full-day excursion to Cambridge
- River Cruise, London Eye
- Brighton Pavilion

S London Silver Package

- 5 full-day excursions to London*
- 1 full-day excursion to Brighton
- 1 full-day excursion to Cambridge
- Entrances to attractions at additional cost

B London Bronze Package (Docklands and Greenwich)

- 7 full-day excursions in London*
- Entrances to attractions at additional cost

*Travelcards included on excursion days only

It is easier than ever to book the package you want

UK Explorer

Packages for all other centres

Canterbury, Norwich, Nottingham, Lincoln, Gloucester, Eastbourne, and Dublin to choose from:

P Platinum Package

- Minimum 4 full-day excursions
- Minimum 4 half-day excursions
- Entrances to attractions included

G Bronze Package

- Minimum 2 full-day excursions
- Minimum 2 half-day excursions
- Entrances to selected attractions



Pick the right centre for you, across the UK and Ireland

Map shows all Twin Centres Locations

London Docklands

Located at the Docklands campus of the University of East London, the centre is right next to the River Thames and close to London City Airport. From the modern residence buildings you get great views of London's iconic skyline, and easy access to central London when you want to explore the city.



Weekday Arrivals - 2025

13 nights - 14 days

- Friday 20th June
- Friday 4th July
- Friday 18th July
- Friday 1st August

* Ask sales rep for 1 week + 3 weeks



Centre highlights

- Centrally located in London
- Just 30 minutes from Brick Lane and Shoreditch
- Situated close to the world famous O2 arena
- Riverfront location, formerly part of the Port of London
- Discover London's historic locations through interesting walking tours
- Alternative days tuition and sightseeing

London Docklands centre information

Student Age	Age 10-18* years
Room Type	Single en-suite bathroom
Class Location	On-site
Meals (on-site)	Choice of two mains + Dessert, fruit, drinks
Laundry	On-site (for a small fee)

Scan the QR to visit Docklands Summer Centre web page



An ideal centre to explore the city of London

London Greenwich

Greenwich is a beautiful, historic, and buzzing part of London, where tradition blends seamlessly with cutting-edge architecture.

A short journey from the centre of London, Greenwich offers a fantastic mix of history, culture and city living.

NEW
Centre
2025

Centre highlights

- An historic part of London, located right in the Heart of Royal Greenwich, a World Heritage Site.
- Home of the famous Cutty Sark Clipper and Royal Naval College - Sir Christopher Wren's waterside masterpiece
- Just 30 minutes from central London via train
- Riverside walks with cafés, shopping and amusements
- Situated near the Royal Observatory, GMT (Meridian Line) and Royal Greenwich Park, former hunting grounds of Henry VIII

London Greenwich centre information

Student Age	Age 12-18* years
Room Type	Single en-suite bathroom
Class Location	University of Greenwich
Meals (on-site)	Choice of two mains + Dessert, fruit, drinks
Laundry	On-site (for a small fee)

Weekday Arrivals - 2025

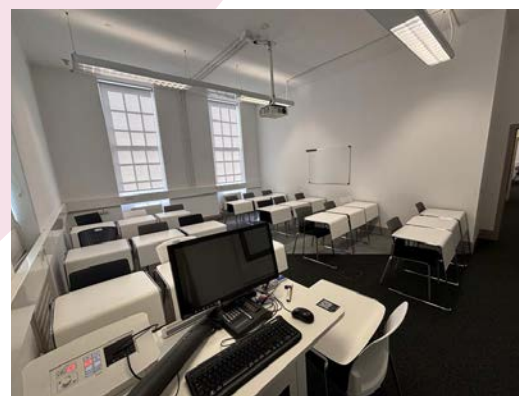
13 nights - 14 days

- Wednesday 9th July
- Wednesday 23rd July
- Wednesday 6th August

* Ask sales rep for 1 week + 3 weeks



Cutty Sark Halls



Scan the QR to visit Greenwich Summer Centre web page

Enjoy historical southeast London

Nottingham

Nottingham is well known as the home of the legendary Robin Hood. Our centre is hosted at University of Nottingham's largest campus, which spans 300 acres. It has been part of the university since 1929 and is one of the largest and most attractive campuses in the country. Students can enjoy the diverse range of attractions and activities Nottingham has to offer.



NEW
Centre
2025

Weekday Arrivals - 2025

13 nights - 14 days

- Wednesday 2nd July
- Wednesday 16th July

* Ask sales rep for 1 week + 3 weeks

Centre highlights

- Several award-winning buildings
- Sports Facilities
- Largest campus at 300 acres
- Two miles away from city centre
- Excursion choices include Manchester and Cambridge



Nottingham centre information

Student Age	Age 10-18* years
Room Type	Single en-suite bathroom
Class Location	On-site
Meals (on-site)	Choice of two mains + Dessert, fruit, drinks
Laundry	Laundry On-site (small fee)

Scan the QR to visit Nottingham Summer Centre web page



Enjoy the rich history of this medieval city

“There is a wonderful mix of student nationalities at Twin, you can learn a lot from each other’s cultures and experiences. I now have international friends! - Pepe, Spain



Students take a break on a walking tour

Norwich

Norwich is famous for the country's largest medieval cathedral. Our Norwich summer centre is on the main campus of University of East Anglia (UEA) in attractive modern buildings. According to the Sunday Times, this city is one of the best places to live in the UK. Norwich offers a perfect starting point to explore the coast and countryside, with London and Cambridge just a train journey away.



NEW
Centre
2025

Weekday Arrivals - 2025

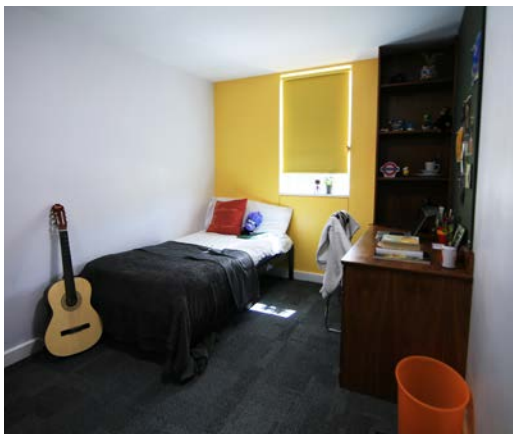
13 nights - 14 days

- Friday 5th July
- Thursday 19th July

* Ask sales rep for 1 weeks + 3 weeks

Centre highlights

- Woodland, lakes, and nature trails crisscross the 145 hectares of our campus
- Voted as safest places to live in the UK
- Range of sport facilities
- Easy access to Norwich City Centre
- Lecture theatres and music rooms



Norwich centre information

Student Age	Age 10-18* years
Room Type	Single en-suite bathroom
Class Location	On-site
Meals (on-site)	Choice of two mains + Dessert, fruit, drinks
Laundry	On-site (for a small fee)

Scan the QR to visit Norwich Summer Centre web page



Study in the heart of this famous English cathedral city



Eastbourne

Hosted at our own 18th century English mansion which boasts an impressive guest list over the years, including Kings, Queens, and British Prime Ministers. Students can enjoy studying at a popular seaside location, in an historic building with beautiful grounds.

Centre highlights

- Great south coast location, just minutes from the beach
- Excursion choices include London and Brighton
- 10-hectare private grounds with tennis courts and football pitch
- Rich architectural and social history dating back to the Roman occupation

Weekday Arrivals - 2025

13 nights - 14 days

- Friday 13th June
- Friday 27th June
- Friday 11th July
- Friday 25th July
- Friday 8th August

* Ask sales rep for 1 weeks + 3 weeks

Eastbourne centre information

Student Age	Age 8-17 years
Room Type	Dormitory room - Shared bathroom
Class Location	On-site
Meals (on-site)	Choice of two mains + Dessert, fruit, drinks
Laundry	Full laundry service included



Scan the QR to visit Eastbourne Summer Centre web page

Study at a summer centre with royal connections*

*Princess Elizabeth (Queen Elizabeth II) and Princess Margaret stayed here in 1946

Canterbury St. Edmunds

Our summer centre traces its history back to 1751, in St Edmund's School. It is nestled in the historic city of Canterbury and offers an experience that combines both fun with British tradition and is just 55 minutes from London by train.



Weekday Arrivals - 2025

13 nights - 14 days

- Monday 14th July
- Monday 28th July
- Monday 11th August

* Ask sales rep for 1 week + 3 weeks



Centre highlights

- Historic British Boarding School dating back to 1751
- Short walk into historic Canterbury and to the famous cathedral
- Canterbury is a UNESCO world heritage site, with beautiful architecture and culturally significant landmarks
- Just 55 minutes from London by high-speed train
- Extensive sport facilities including swimming pool

Canterbury centre information

Student Age	Age 8-17
Room Type	Singles/twins/triples multi-bedded rooms with shared bathrooms/ensuite
Class Location	On-site
Meals (on-site)	Choice of two mains + Dessert, fruit, drinks
Laundry	Full laundry service included

Scan the QR to visit Canterbury Summer Centre web page



Gloucester

Located at the contemporary University of Gloucestershire, Oxstalls campus, this centre is situated close to the England-Wales border. Positioned along the River Severn, this Cathedral City is close to the charming town of Cheltenham and the scenic landscapes of the Cotswolds.



Centre highlights

- Enjoy the famous rolling hills of the Cotswolds
- Close to the centre of historic Gloucester
- Gloucester featured in 3 Harry Potter films
- Renowned 11th century cathedral which featured in 3 Harry Potter films
- Just 80 minutes from Oxford

Weekday Arrivals - 2025

13 nights - 14 days

- Wednesday 2nd July
- Wednesday 16th July
- Wednesday 30th July
- Saturday 30th August

* Ask sales rep for 1 week + 3 weeks

Gloucester centre information

Student Age	Age 10-18*
Room Type	Double/Twin en-suite rooms/ single en-suite
Class Location	On-site
Meals (on-site)	Choice of two mains + Dessert, fruit, drinks
Laundry	On-site (for a small fee)



Scan the QR to visit Gloucester Summer Centre web page

Study and explore in this historic cathedral city

Dublin

Hosted at one of Ireland's leading boarding schools, The King's Hospital school. Founded in 1669, the school occupies a stunning 40-hectare wooded site on the banks of the River Liffey. It offers beautiful views of the woods and river and is located just 20 minutes from Dublin city centre and the international airport.



Weekday Arrivals - 2025

13 nights - 14 days

- Monday 30th June
- Monday 14th July

* Ask sales rep for 1 week + 3 weeks



Centre highlights

- Heated indoor swimming pool
- Extensive sports facilities include rugby, football, volleyball pitches, basketball and tennis courts, and a state-of-the-art indoor gymnasium
- Theatre and music rooms
- Large enclosed grounds with plenty of green areas
- Easy access to Dublin City Centre

Dublin centre information

Student Age	Age 10-17
Room Type	Dormitory shared en-suite bathroom
Class Location	On-site
Meals (on-site)	Choice of two mains + Dessert, fruit, drinks
Laundry	Laundry - Supervised by GL only

Scan the QR to visit Dublin Summer Centre web page



A scenic campus, surrounded by beautiful woodland

“There is a nice student community at Twin, a good mix of nationalities. I felt like every student matters”
- Rosie, Brazil



Lincoln

Home to Lincoln Cathedral, which for over 200 years was the world's building. With award winning attractions, great shopping and various places to eat and drink. Lincoln has a lot of history from the past 17 centuries. It has old Roman structures, streets named by Vikings, and strong castles from the Middle Ages.



Weekday Arrivals - 2025

13 nights - 14 days

- Monday 7th July
- Wednesday 21st July

* Ask sales rep for 1 week + 3 weeks

Centre highlights

- The University of Lincoln is centrally located in a historic city
- Excursions include York and Cambridge
- 10-minute walk to city centre and train station
- Lincoln University won the 2024 *WhatUni Student Accommodation Award*



Lincoln centre information

Student Age	Age 12-17 years
Room Type	Dormitory room - Shared bathroom
Class Location	On-site
Meals (on-site)	Choice of two mains + Dessert, fruit, drinks
Laundry	Full laundry service included

Scan the QR to visit Lincoln Summer Centre web page



Study at a summer centre in the heart of this medieval City

“In my class I learned from the ground up, the teacher made everything so interesting”
- Inez, Portugal



Students enjoying classtime



Follow us on Instagram and don't forget to tag us #twinsummercentres



What students think

We love to see you posting on social media about your time in our centres. Check out some of the pictures and feedback from previous and current students:

Having the chance to see lots of different sights such as The London Eye, The British Museum and Chinatown - *Veronica, Italy*

They are professional; very good experience. Friendly atmosphere and fun - *Karla, Czech Republic*

We very much liked the Eastbourne campus, we learnt a lot and made friends - *Dorin, Romania*

I recommend Dublin with Twin for everyone ❤️ - *Przemyslaw, Poland*

I went sightseeing around the city and saw London Bridge, Big Ben and the O₂ Arena - *Ahmed Salim, Oman*

Teachers are great. Everything is good in general - *Alhas, Turkey*

Twin Instagram

We are always pleased to be tagged in content taken by you.

If you share a photo or video of your time with us, tag us @TwinEnglishCentres and add the #TwinSummer hashtag. Every week we will share the best content in our profile.

Be part of our story!



Follow us on Instagram and don't forget to tag us #twinsummercentres



Accommodation

We want our students to be as comfortable and happy as possible, and we understand that living arrangements can be as important as studying. Our options are carefully chosen to make sure the standards meet our students' expectations. Our accommodation options for summer include homestay and residential, each including three meals per day.

Residential accommodation

Our accommodation is different from centre to centre. While some centres offer single or double en-suite, others offer shared rooms and shared bathrooms. All include common areas for students to enjoy and plenty of outside space is available for activities. Students can look forward to spending more time with their new friends and sharing mealtimes.

Homestay accommodation

When students stay in homestay accommodation, they have an opportunity to practise their English outside of the classroom while living in a home environment. Our accommodation team sources friendly and welcoming homestay options in Eastbourne. We also work with our external providers to make sure that homestay accommodation meets our high standards, and our students are safe, comfortable and happy with their host.

Accommodation explained

- Bed and board included (three meals per day)
- Welcoming and comfortable environment
- Communal areas for relaxing and socialising
- Students must bring their own towel and toiletries
- Laundry service available

Making sure your stay is as comfortable as possible



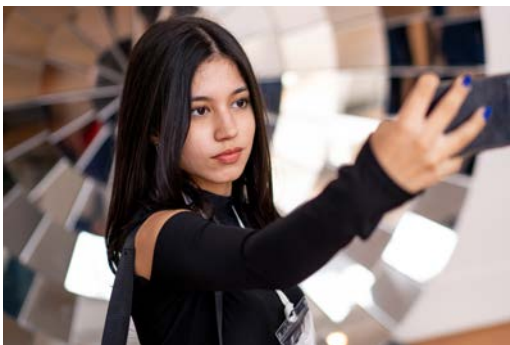
Extra Services

At Twin we like to make sure we handle all of our customers' requirements. In addition to our courses, accommodation, excursions, and attractions we can also arrange:



- Airport transfers meet & greet

Airport transfers meet & greet are included when you book a transfer.



- Blue badge guides

These guides are available in London only and offer tours of exceptional quality.

- Culture and entertainment

We provide tickets to a number of cultural events in London, including ballets, musicals, and concerts.



- Travel and medical insurance

Twin can provide travel and medical insurance through a licensed underwriter.

Let us go the extra mile to help you out

For more information about our services, please visit:



English Centres:
twinenglishcentres.com



Internships & Work Experience:
twininternships.com



School Group Travel:
twingrouptravel.com

Twin's commitment to safeguarding

The safety and well-being of students is our highest priority. Our centres are accredited, and our safeguarding standards are enforced with the following:

- 24-hour emergency contact number
- All activities and excursions adhere to adult to child supervision ratios of:
 - 9-12 years – One adult to eight children
 - 13-18 years – One adult to ten children
- Individual students assigned to a dedicated Twin Group Leader
- Safeguarding Lead on duty in each centre at all times
- Staff recruitment is carried out by staff trained in NSPCC Safer Recruitment course
- Enhanced DBS, Garda vetting, or other country-specific police checks are carried out on all staff

